

Washington State Safety Assessment Facility Evaluators

BUILDING SAFETY EVALUATOR RESOURCE REQUESTS
WORKSHOP
WABO ABM APRIL 17, 2026

JON SIU & PAUL BRALLIER
WASAFE COORDINATORS

STEPHANIE DAY
CITY OF KIRKLAND

WASAFE

1

WABO WORKSHOP OBJECTIVES

What are Building Safety Assessments?
WAsafe Overview
How to make a Building Safety Assessment Resource Request
Communicating Resource Request with EOC Liaison
Practice Scenario

WASAFE

2

What are Building Safety Assessments?

- ATC 20 & 45
- FEMA P-2055 Post-disaster Building Safety Evaluation Guidance
- Disaster Recovery Reform Act of 2018 (DRRA) Section 1241
- CalOES Structural Assessment Program
- Resilient Washington State (November, 2012)
 - Subcabinet Draft Recommendations (September, 2017)

WASAFE

3

Guidance Documents

ATC-20-1 (2005): earthquake guidance
ATC-45 (2004): flood and wind guidance

WASAFE

4

Who is WAsafe?

Coalition of four NGOs:

- Washington Association of Building Officials (WABO)
- Structural Engineers Association of Washington (SEAW)
- American Society of Civil Engineers, Seattle Section (ASCE Seattle)
- American Institute of Architects, Washington Council (AIA-WA)

WASAFE

5

WAsafe Objectives

Assist building officials with **building safety assessments** following a disaster (earthquake, flood, storm)

- Develop a group of qualified volunteers
- Provide WAsafe evaluator training
- Maintain roll of volunteers

Assist WA State EMD in calling up and dispatching volunteers to where they are needed in large events

- Share resources

WASAFE

6

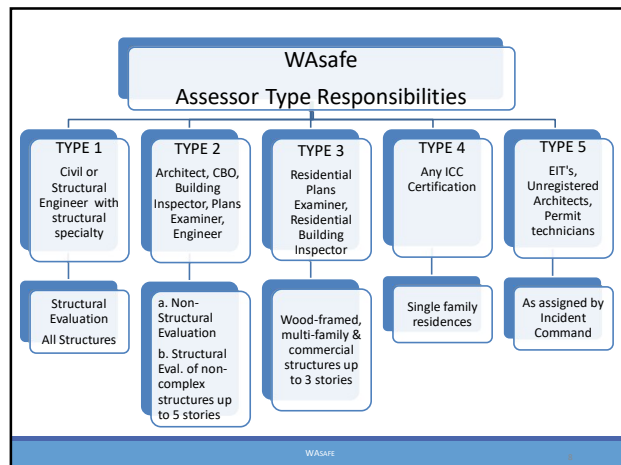
Program Focus



Allow people to reoccupy safe buildings

WAsafe

7



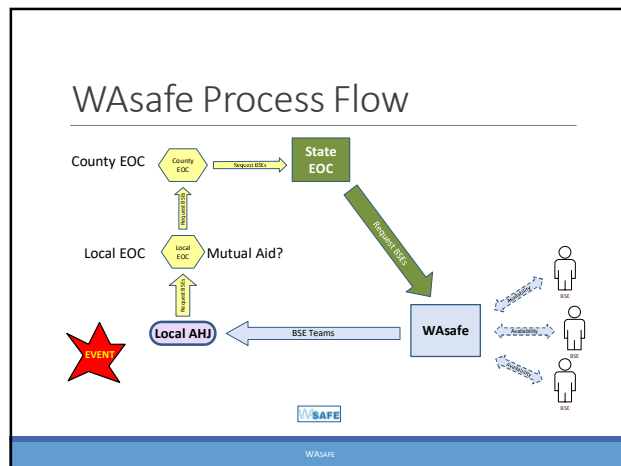
8

How to Make a Building Safety Assessment Resource Request

Drop, Cover and Hold. What Next?

WAsafe

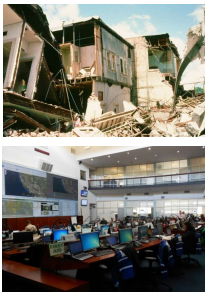
9



10

Building Safety Assessment Resource Requests

- Event triggers local response
- Local building official calculates needed number of building safety evaluators
- Local building official sends building safety assessment resource request to local EOC
- Local EOC finds resources thru Mutual Aid or Local EOC sends request to County EOC
- County cannot fulfill request => forward request to State EOC
- State initiates contact with WAsafe and WAsafe dispatches volunteers to requesting jurisdiction(s)



WAsafe

11

Resource Request Process

Initially, resources are requested by the local Building Official to their EOC

- Local EOC requests BSE's by capability through Operations Section
- Coordinating instructions are identified
 - Number, Type, Location, Who to report to, duration

Priorities assigned by life, property, environment, and economy

Operations Section tasks Emergency Support Functions or assigns to Logistics

- Resource is tracked from start to completion
- Mutual Aid first
- Elevate BSE Resource Request to County then State EOC
- State EOC Contacts WAsafe Coordinators

Resources not available at state level are requested from Regional Response Coordination Center (FEMA Region 10)


- FEMA uses a parallel federal ESF Mission Assignment process

WAsafe

12

Local Government Role
<https://wasafecoalition.org/>

- Determine numbers of needed Building Safety Evaluators
- Request BSE's thru local EOC
- Provide jurisdictional contact
- Provide orientation training
- Issue local placards
- Other Field Supplies – tape
- Deputize Mutual Aid workers or WAsafe volunteers
- Coordinate Building Safety Evaluator activities



WASAFE

13

Building Safety Evaluator Resource Request Exercises

Workshop Scenarios for fulfilling Building Safety Assessment Resource Requests

WASAFE

14

Exercise

Moderately Severe Earthquake

WASAFE

15

Pre-Event Preparation

AVAILABLE RESOURCES

- www.wasafecoalition.org
- Tools and Resources
- Example Calculations (How Many Wasafe BSE's to Request) (handout)
- Requesting WAsafe Building Safety Evaluators
- Evaluation Deployment Playbook (handout)
- Building Official/Emergency manager Checklist (handout)

WASAFE

16

www.wasafecoalition.org

OPEN WEB PAGES AND FIND CONTENT

WASAFE

17

Scenario - Kirkland (population ~ 100,000)
 Moderately Severe Earthquake

EVENT

- Shallow 6.8 – 6.9 Magnitude EQ on the S. Whidbey Fault.
- Surface Rupture – 10 miles from Kirkland.
 - MMI Intensity VII to VIII in Kirkland (see next slide)

■ SENARIO TIMELINE

- 4-5 Days after initial EQ event.

FIRST TASK

- Calculate number of BSE's required.

SECOND TASK

- Communicate with EOC Liaison to Request Building Safety Assessment Resources

WASAFE

18

CIM Intensity	People's Reaction	Furnishings	Built Environment	Natural Environment
I	Not felt			Changes in level and clarity of well water are occasionally associated with great earthquakes at distances beyond which the earthquakes felt by people.
II	Felt by a few.	Delicately suspended objects may swing.		
III	Felt by several; vibration like passing of truck.	Hanging objects may swing appreciably.		
IV	Felt by many; sensation like heavy body striking building.	Dishes rattle.	Walls creak; window rattle.	
V	Felt by nearly all; frightens a few.	Pictures swing out of place; small objects move; a few objects fall from shelves within the community.	A few instances of cracked plaster and cracked windows with the community.	Trees and bushes shaken noticeably.
VI	Frightens many; people move unsteadily.	Many objects fall from shelves.	A few instances of fallen plaster, broken windows, and damaged chimneys within the community.	Some fall of tree limbs and tops, isolated rockfalls and landslides, and isolated liquefaction.
VII	Frightens most; some lose balance.	Heavy furniture overturned.	Damage negligible in buildings of good design and construction, but considerable in some poorly built or badly designed structures; weak chimneys broken at roof line, fall of unbraced parapets.	Tree damage, rockfalls, landslides, and liquefaction are more severe and widespread with increasing intensity.
VIII	Many find it difficult to stand.	Very heavy furniture moves conspicuously.	Damage slight in buildings designed to be earthquake resistant, but severe in some poorly built structures. Widespread fall of chimneys and monuments.	
IX	Some forcibly thrown to that ground.		Damage considerable in some buildings designed to be earthquake resistant; buildings shift off foundations if not bolted to them.	
X			Most ordinary masonry structures collapse; damage considerable in many buildings designed to be earthquake resistant.	

WASAFE BSE Module 2

19

Task 1 – Kirkland (population ~ 100,000) Calculate Number of BSE's Required

BUILDING ESTIMATES

- Total Buildings - 5000.
- Single Family Residences - 4000.
- High Occupancy/Places of Assembly (shelters, schools) – 20.
- Critical Facilities (hospitals, fire stations, police stations) – 15
- Commercial Buildings (1 – 5 stories) - 965

AVAILABLE STAFF AND TIMELINE

- Building and Planning Department PE's and Inspectors – 19.
- Other staff that can perform duties of Type 5 responders?
- Mayor wants all buildings evaluated in 3 weeks.

FIRST TASK

- Calculate number of BSE's required.

WASAFE

20

Task 2 – BSE Resource Request

WASAFE

21

BUILDING SAFETY EVALUATOR RESOURCE REQUEST

- Requestor's Name: _____ Request Date: _____
- Title/Position of Requester: _____
- Name of Jurisdiction: _____
- Email: _____
- Phone: _____ (Office) _____ (Cell)
- Check-In Location: _____
- On-site Point of Contact Name: _____ Point of Contact Number: _____
- Reimbursement for Food/Housing/Transportation:
 Yes No Unknown
- Number of volunteers of each Type of Building Safety Evaluators that are needed.
 (See Exhibit A for a description and chart of what each type is)
 Type 1: _____ Type 2: _____ Type 3: _____ Type 4: _____ Type 5: _____
- Identify the number of days volunteers are needed:
 # of days needed: _____ Start: _____ End: _____
- Brief description of the problem or task to be accomplished or other additional notes:

WASAFE

23

EOC RESOURCE REQUEST FORM (ICS 213 RR)

WA RESOURCE REQUEST FORM (ICS 213 RR)

1. Mission Number & Incident Name	2. Requester Agency	3. Date & Time (month/year/hour)	4. Requester Tracking Number
5. Resource Requested	6. Requested Date & Time (month/year/hour)		
7. Additional Personnel/Support Needed (ICM/FM/EOC)	8. POC at Delivery/Reporting Location (Name & Contact Info)		
9. Requested Delivery/Reporting Location (Address/Directions, etc.)	10. Priority (in hours) (Consider Intermediate) (Priority/Response)		
11. Subtitle Substitutes and/or Supported Sources	12. a. Have all commercial resources been exhausted? <input type="checkbox"/> Yes <input type="checkbox"/> No		
13. a. Have all local resources been exhausted? <input type="checkbox"/> Yes <input type="checkbox"/> No	14. Requester is willing to provide funding? <input type="checkbox"/> Yes <input type="checkbox"/> No		
15. b. Have all mutual aid resources been exhausted? <input type="checkbox"/> Yes <input type="checkbox"/> No	16. Requester Authorized by: _____		
17. Requested by Name/Position & phone/email	18. Requester Authorized by: _____		
19. EOC/EC Logistics Tracking Number	20. Name of Supplier/POC, Phone/Fax/Email		
21. Notes:	22. Date & Time (month/year/hour)		
23. Approval Signature of Authorized Logistics Representative	24. Date & Time (month/year/hour)		
25. Order placed by (check name) (ICM/FM/EOC)	26. Mutual Aid Tracking #		
27. Elavate to State	28. Mutual Aid Tracking #		
29. Request Comments from Finance	30. Date & Time (month/year/hour)		
31. Finance Section Signature	32. Date & Time (month/year/hour)		

Original to: Documentation Unit
Copies to: Logistics Section, originating EOC/Agency, and Finance & Administration Section

WASAFE

24

WASAFE

Washington State Safety Assessment Facility Evaluators

DISCUSS SCENARIO AND TTX QUESTIONS?

WASAFE

26